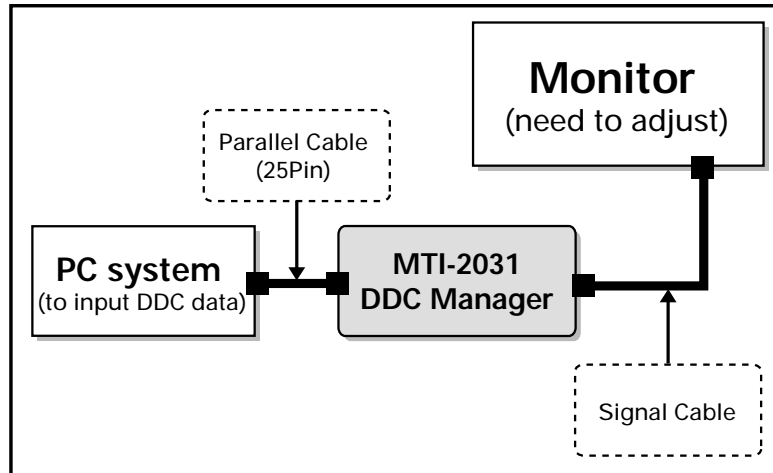


4 Alignments and Adjustments

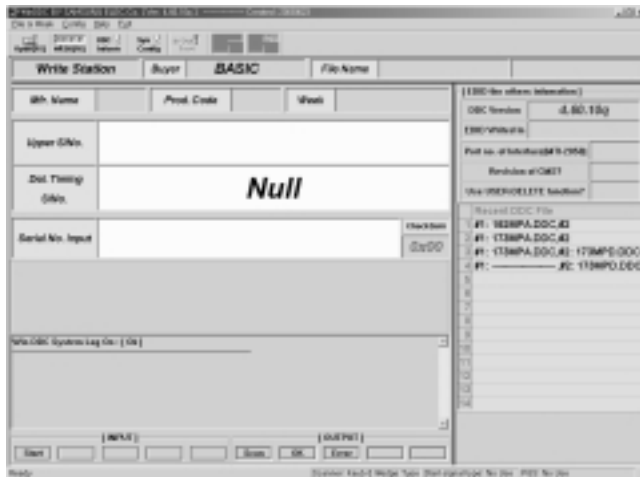
This section describes to adjust LCD monitor after replacing EEPROM, Main PBA or Panel.

4-1 DDC jig installation



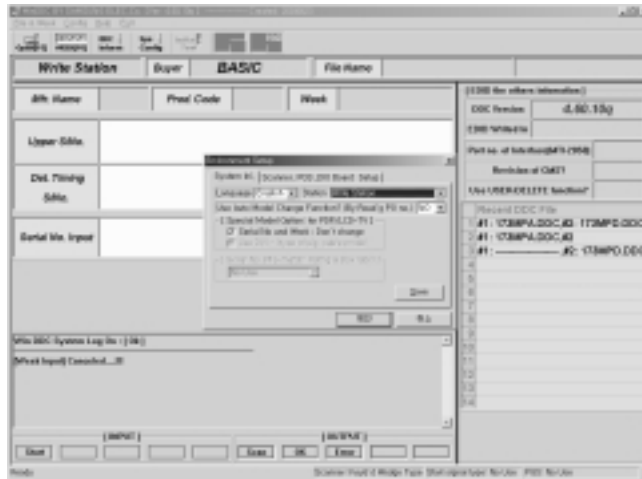
* Please use DVI cable connection adapter for DVI input.

4-2 How to execute DDC

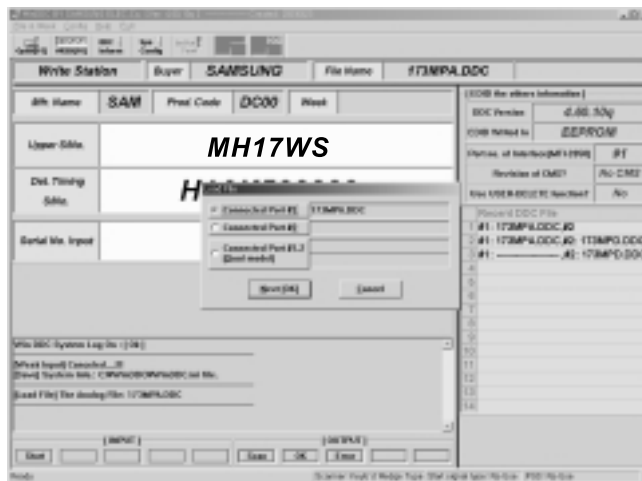


1. Execute "WinDDC.exe"

4 Alignments and Adjustments



- Click “Sys Config”
Select “Station : Write station”.
Check “Serial No and Week : Don’t change”
Click “Save”



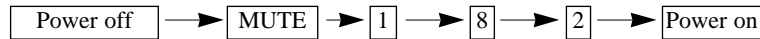
- Click “Open” icon.
Select “Connected Port #1” and Next “OK”.
* File Name - 730MPA.DDC : Analog
730MPD.DDC : DVI
Press enter key on your keyboard.



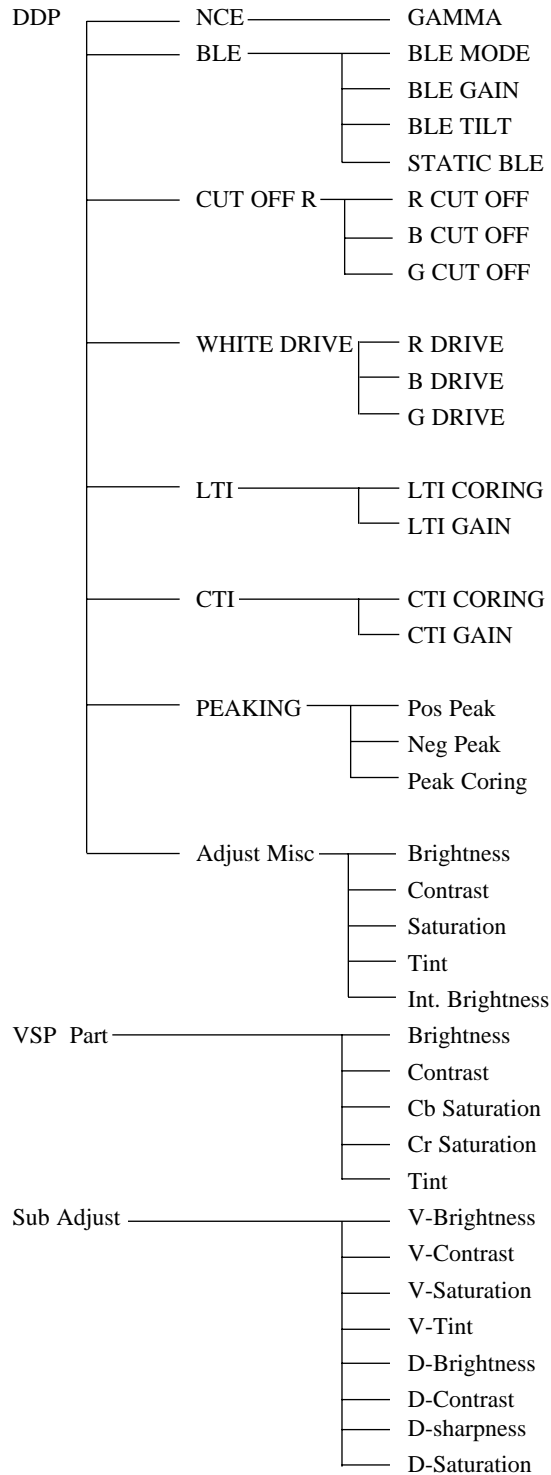
- Confirm the “DDC OK”.

4-3 Factory Mode Adjustments

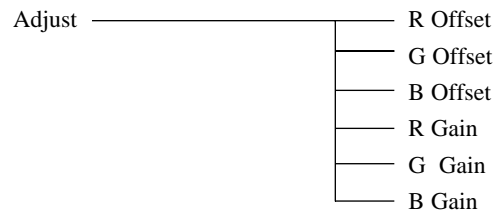
4-3-1 Factory Mode Admission



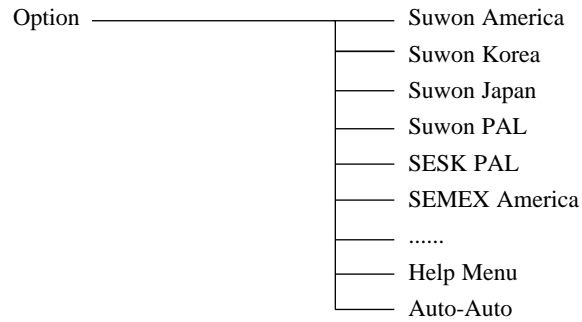
4-3-2 Factory Mode OSD



4 Alignments and Adjustments



PC/DTV Auto Color



Check Sum

Panel Information

Reset

Bus-Stop